

ECO ABDOMINAL

SISTEMÁTICA

Antonio Lanzas Carmona.

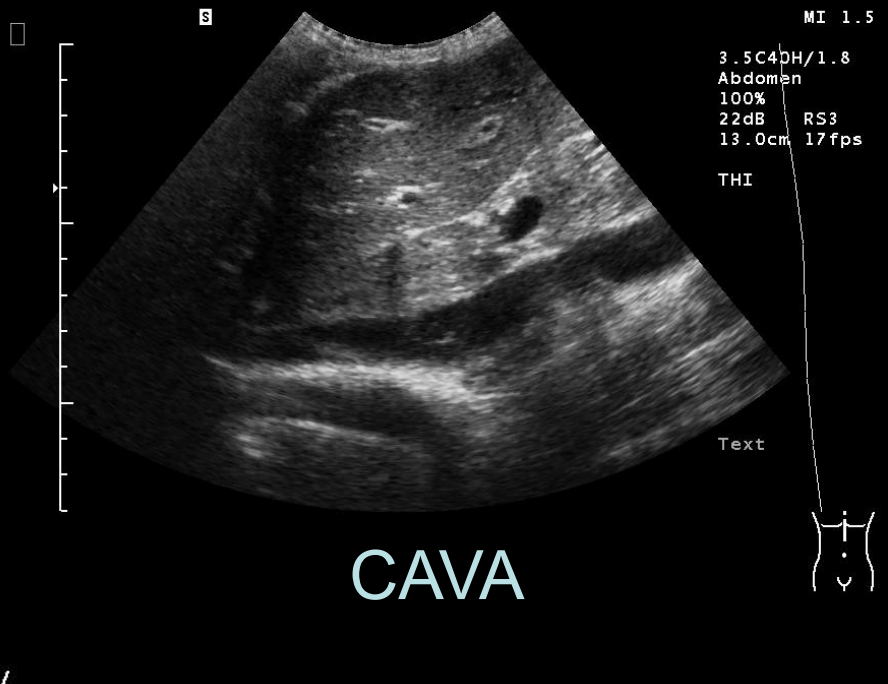
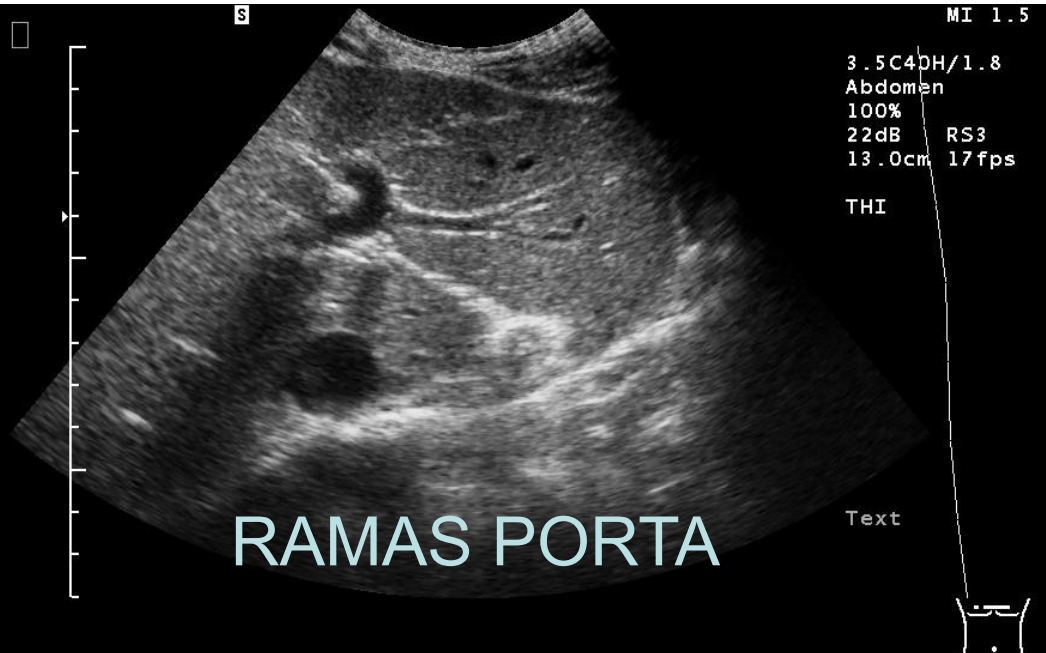
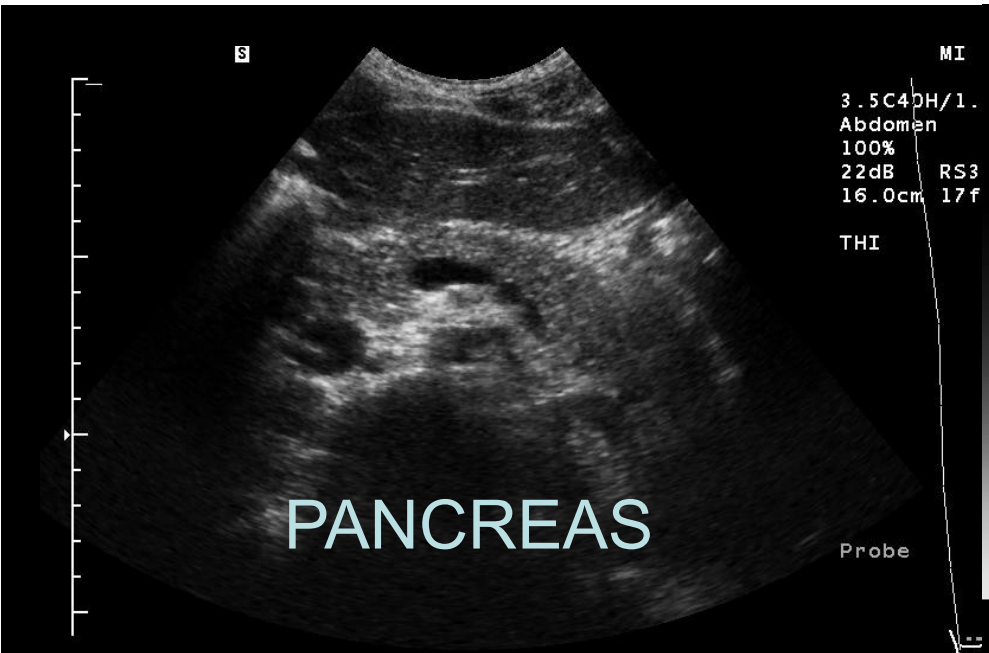
TSID Hospital Universitario de Getafe.

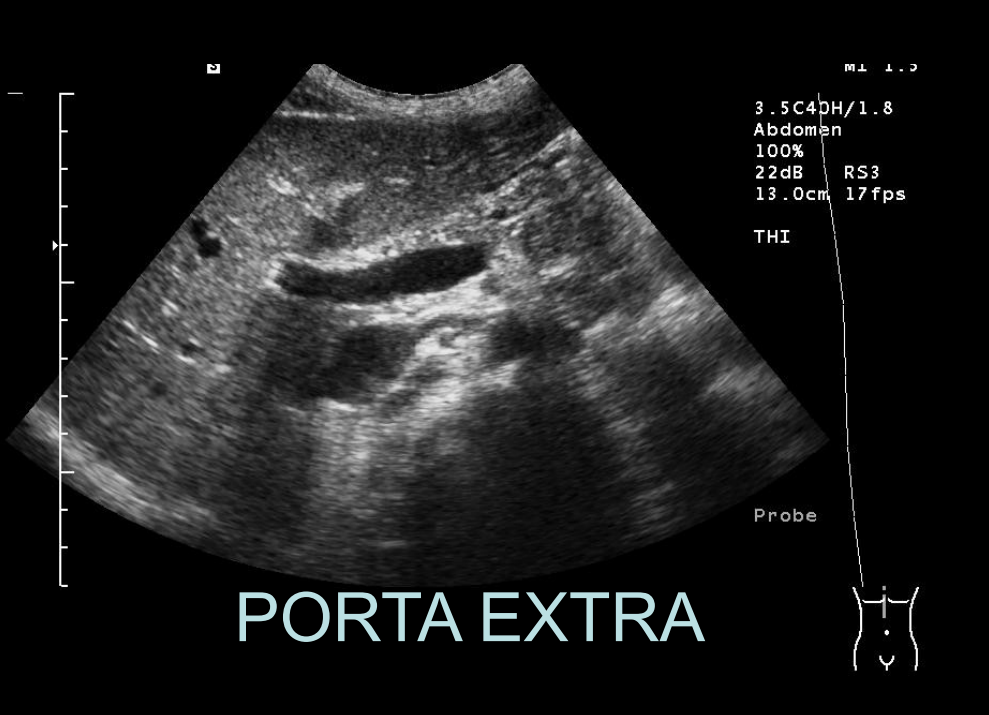
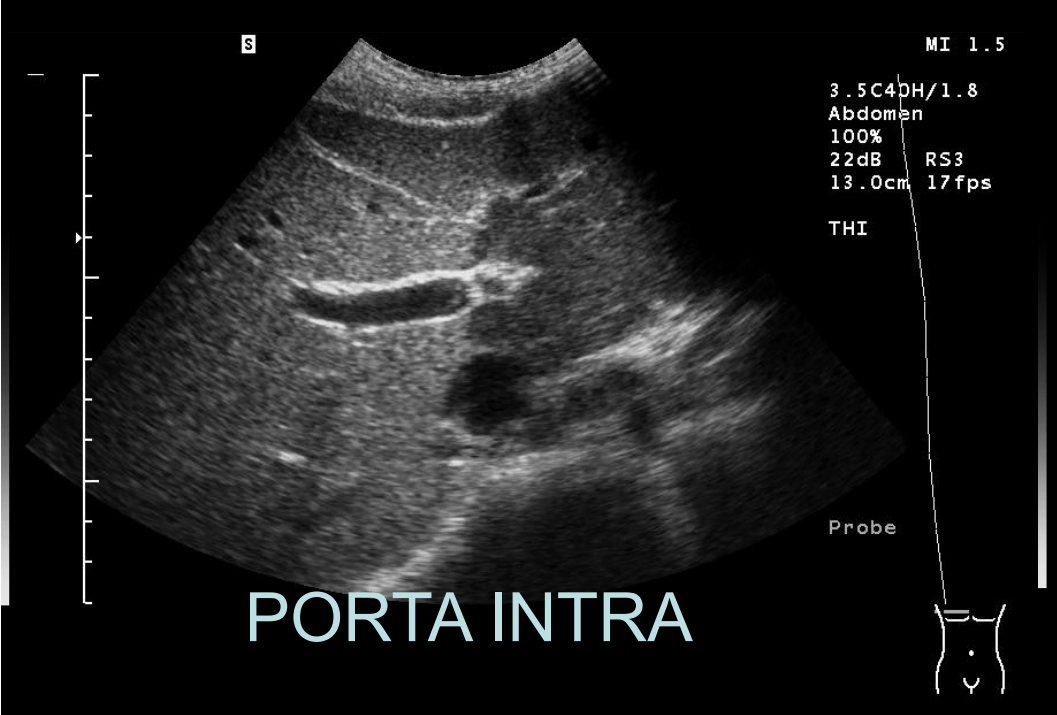
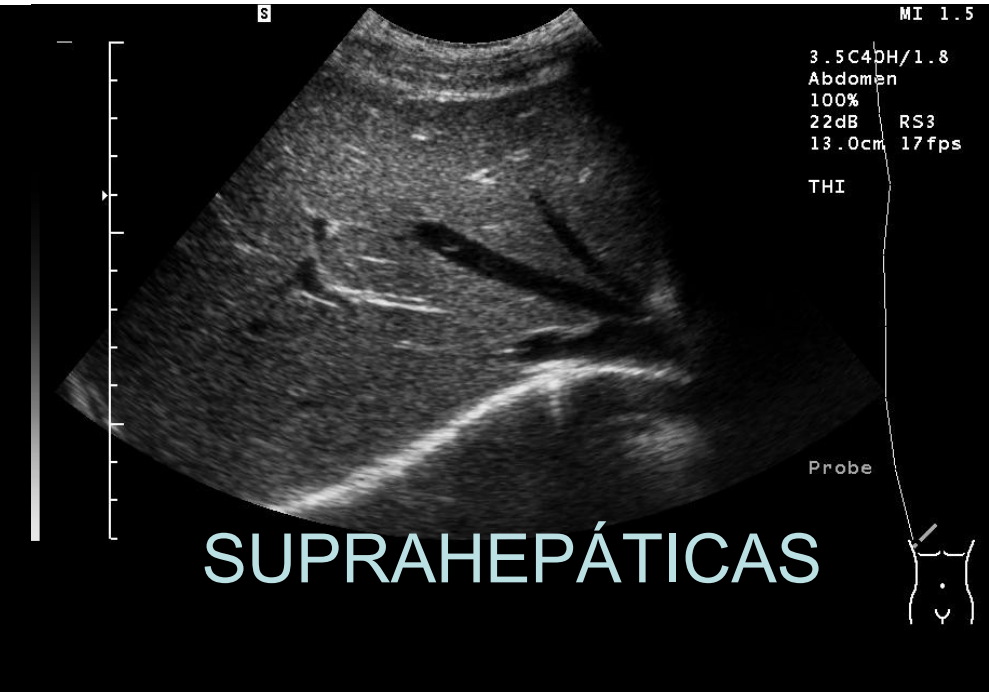
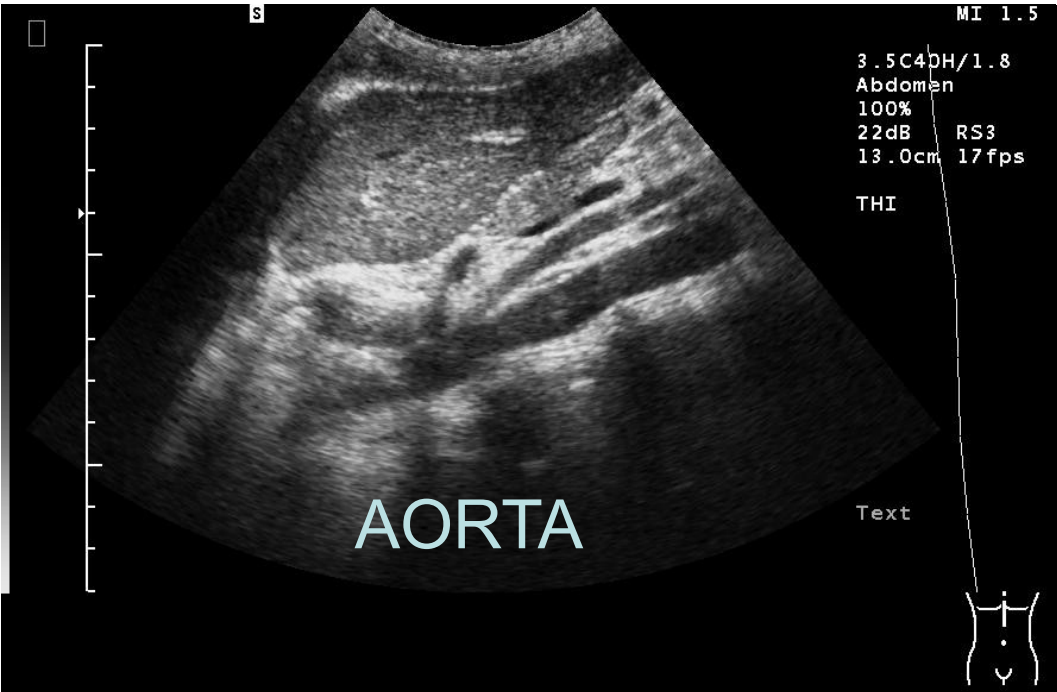
# TECNICA EXPLORATORIA

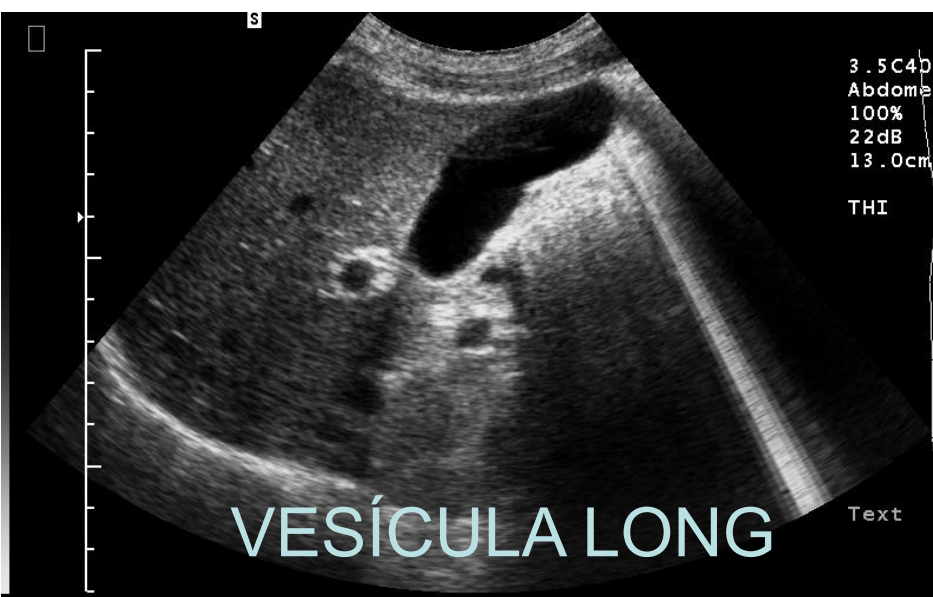
- PACIENTE EN DECUBITO SUPINO
- AYUNAS
- SONDA CONVEX DE BAJA FRECUENCIA
- VALORAR Y MEDIR ÓRGANOS COMPACTOS
- VALORAR ECOGENICIDAD DE ORGANOS
- VALORAR VASOS Y GÁNGLIOS

# PROTOCOLO

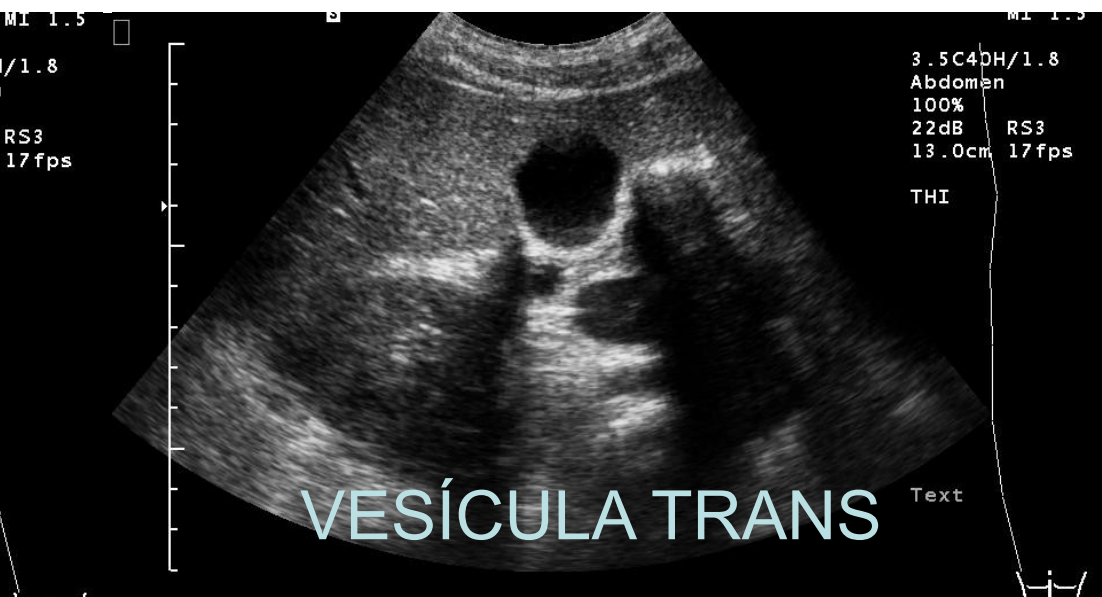
- PÁNCREAS
- HIGADO
  - LHI
  - LHD
- RIÑÓN DERECHO
  - INCLUYENDO SUPRARRENALES
- BAZO
- RIÑÓN IZQUIERDO
  - INCLUYENDO SUPRARRENALES
- AORTA Y RETROPERITONEO
- VEJIGA



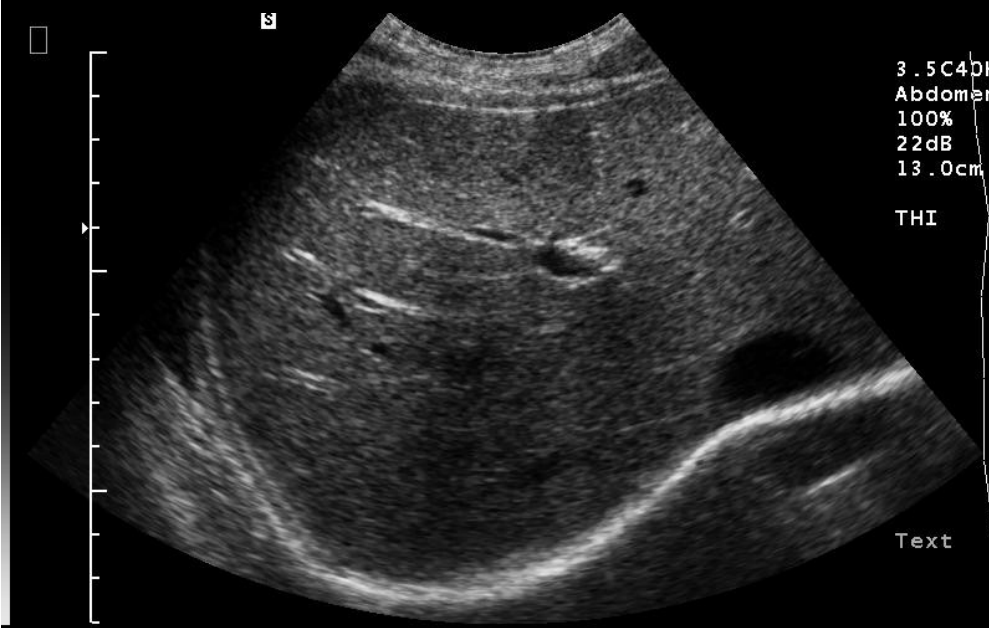




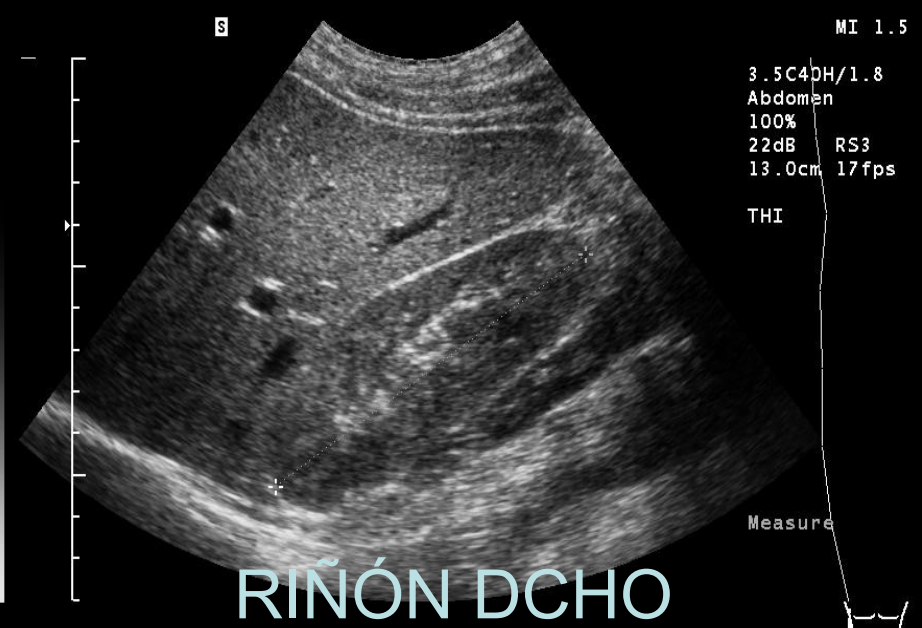
VESÍCULA LONG



VESÍCULA TRANS

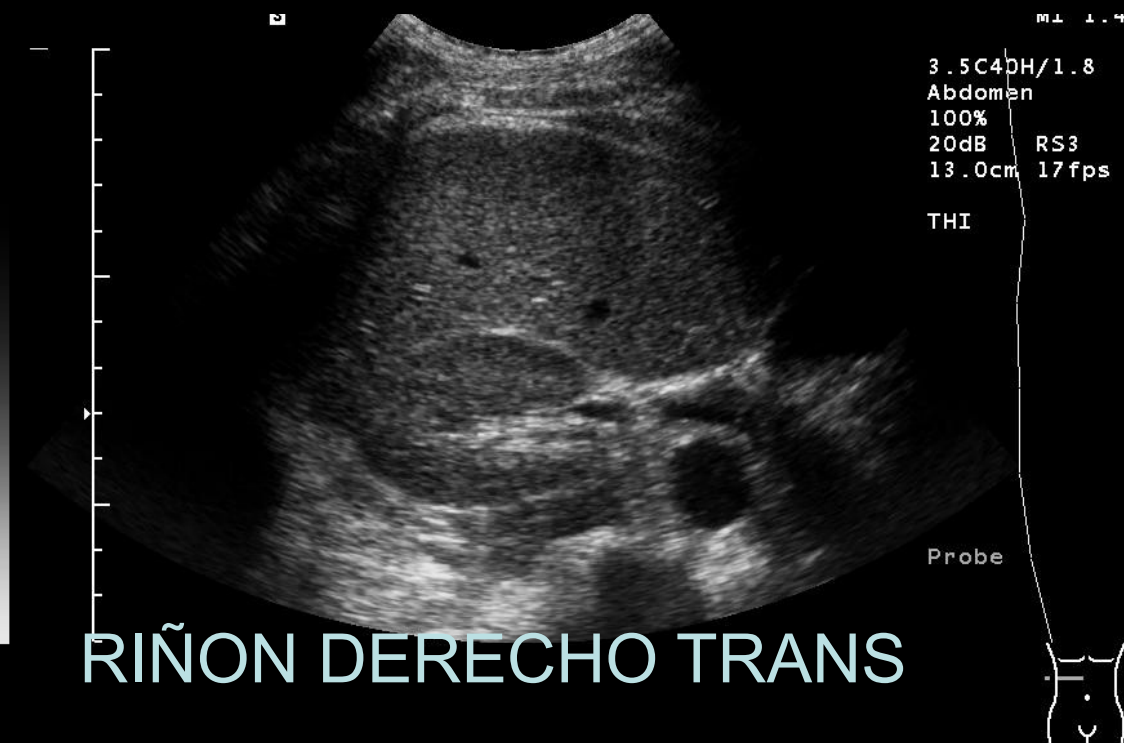
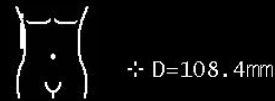
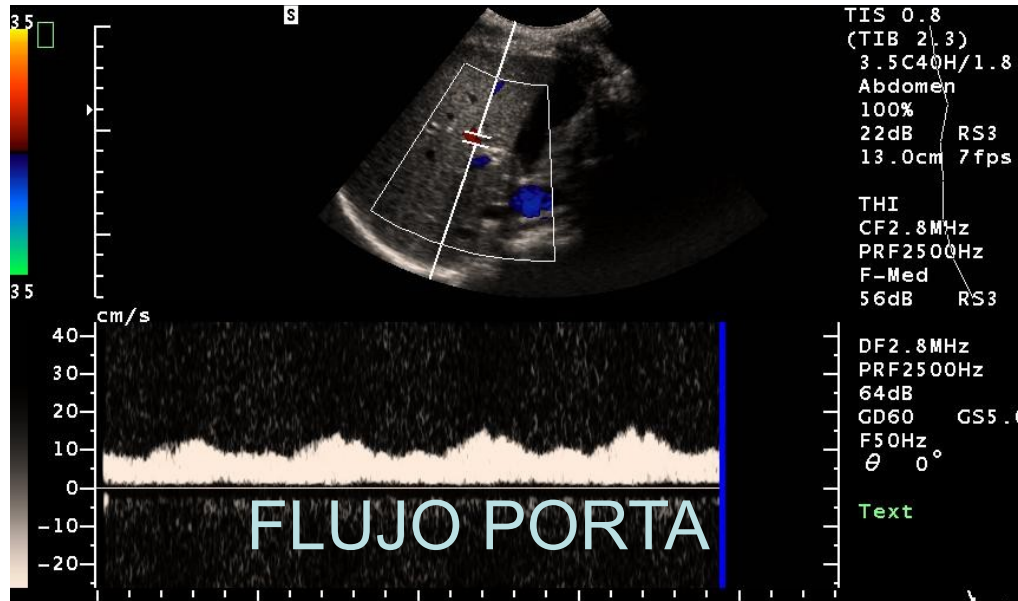


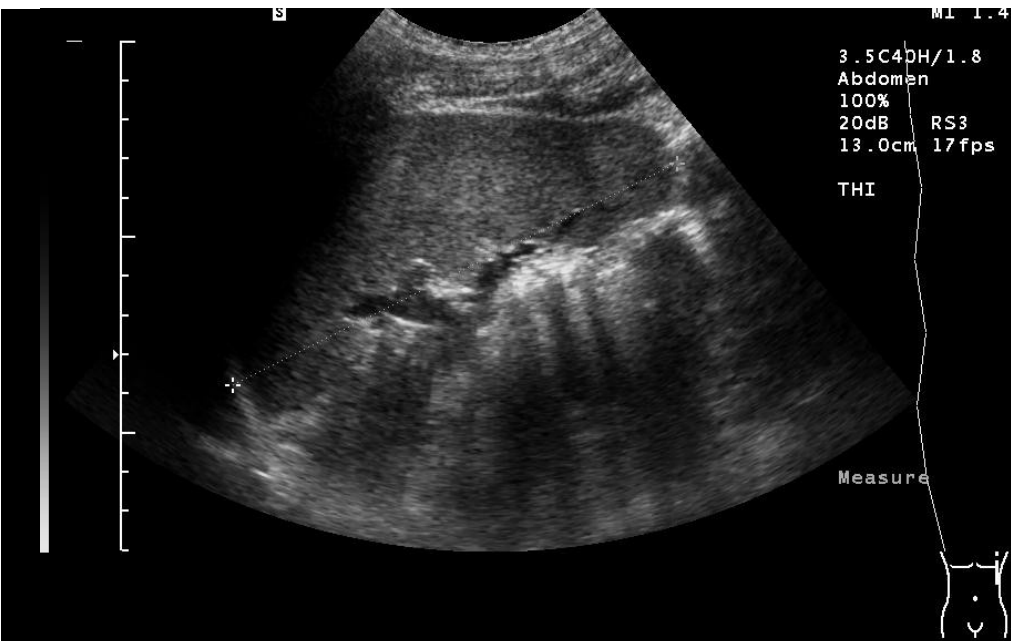
LOB. HEP. DERECHO



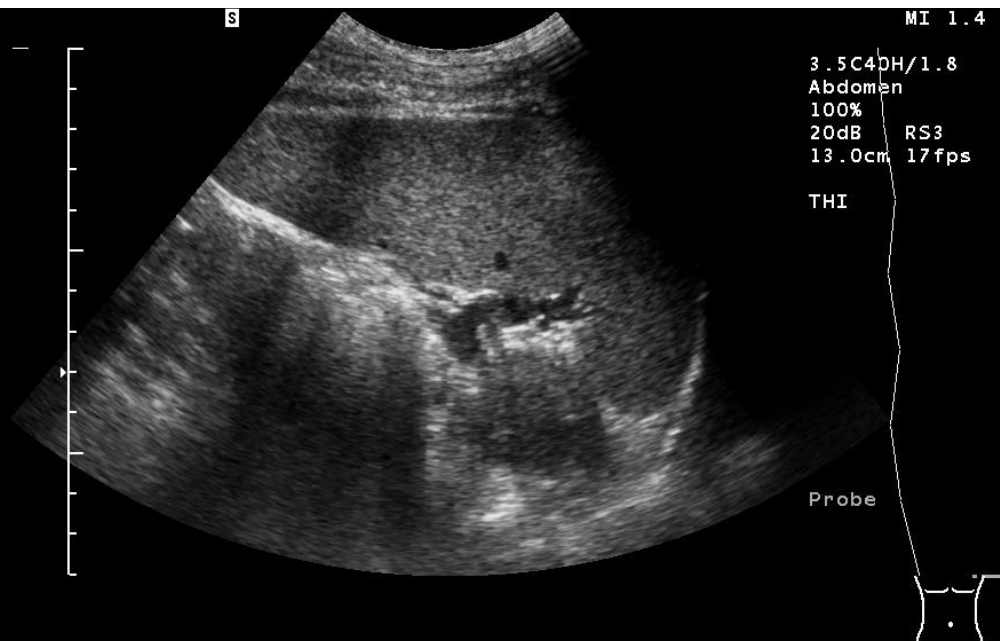
RIÑÓN DCHO  
COMPARATIVA

D=100.7mm





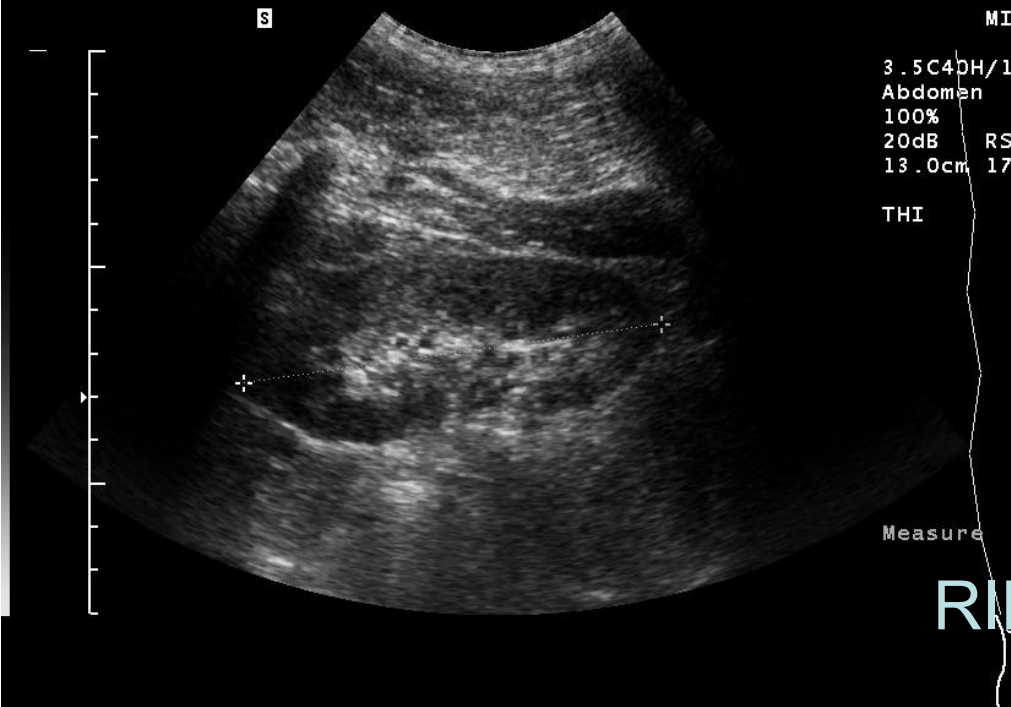
MI 1.4  
3.5C4DH/1.8  
Abdomen  
100%  
20dB RS3  
13.0cm 17fps  
THI  
Measure



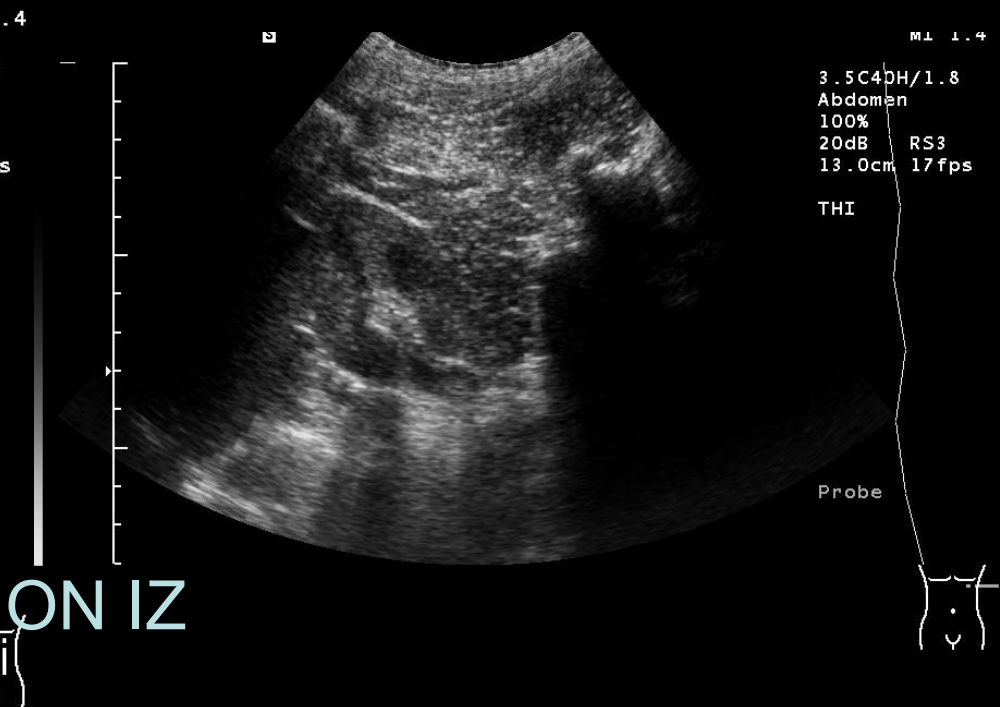
MI 1.4  
3.5C4DH/1.8  
Abdomen  
100%  
20dB RS3  
13.0cm 17fps  
THI  
Probe

↔ D=126.6mm

# BAZO



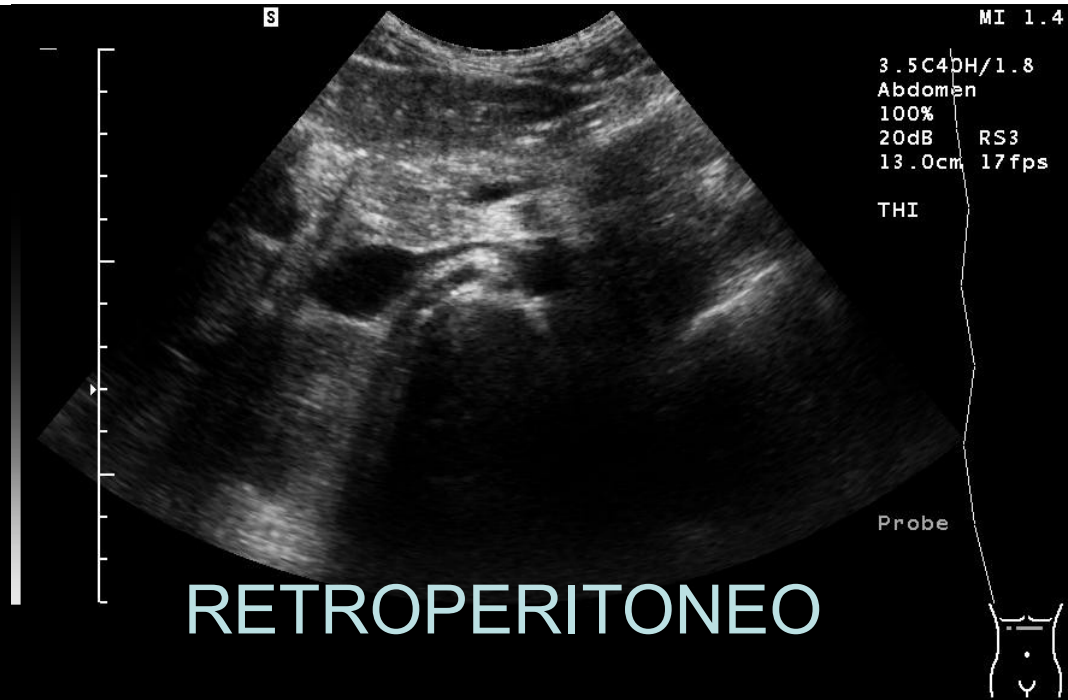
MI 1.4  
3.5C4DH/1.8  
Abdomen  
100%  
20dB RS3  
13.0cm 17fps  
THI  
Measure



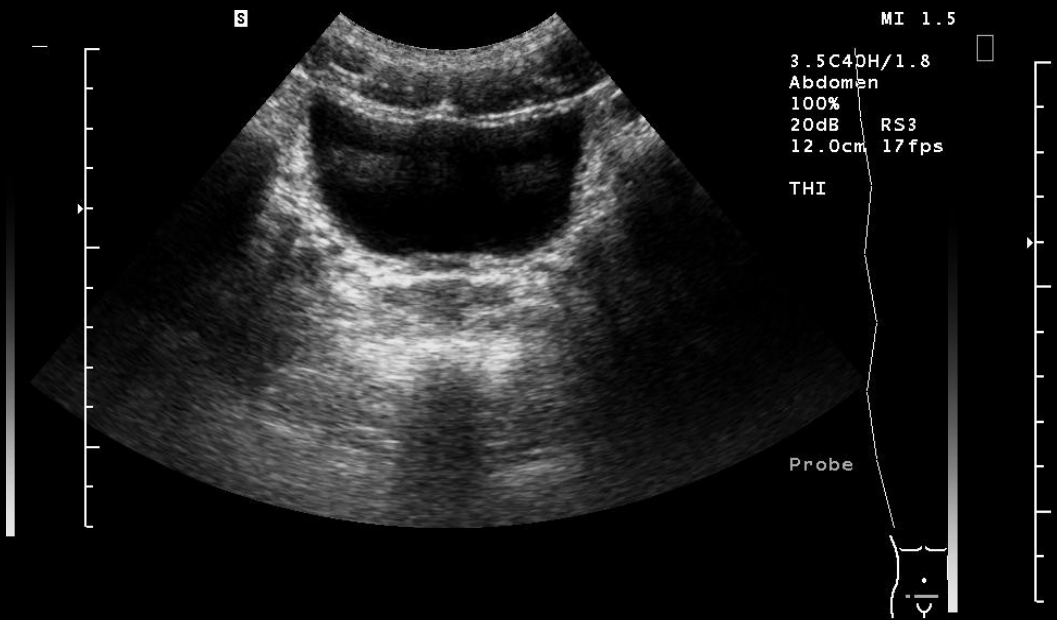
MI 1.4  
3.5C4DH/1.8  
Abdomen  
100%  
20dB RS3  
13.0cm 17fps  
THI  
Probe

↔ D= 97.3mm

# RIÑON IZ



# RETROPERITONEO



# VEJIGA